

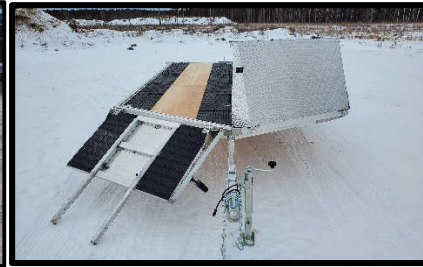


Premium Aluminum Trailers, Built For Work or Play

Phone: (204) 364-2785
Email: sales@stronghaul.com
Address: 139144 Road 11E Arborg, MB, Canada
Box 269 R0C 0A0

SASD/SATD GEN2

Snowmobile Style, **A**luminum Frame, **S**ingle OR **T**andem Axle, **D**eck over Trailer



-Standard Features and Equipment-

SASD-101x12-G2

SATD-101x22-G2

-6061 All Aluminum Frame	-6061 All Aluminum Frame
-3500lb Straight Axle, Idler	-3500lb Straight Axles, Elec. Brake
-Zinc-Plated Axle Mounting Brackets with Polypropylene Tape	-Zinc-Plated Axle Mounting Brackets with Polypropylene Tape
-4-Pin Flat, Easy Pull Electrical Connector	-7-Pin RV Style Electrical Connector
-2" Ball Coupler, Max rating 700lb tongue WT, with Polypropylene Tape	-Junction Box, Break-away Kit with Battery and Charger
-ST205/75R15 6-ply Radial Tires	-2-5/16" Ball Coupler, Max rating 2,100lb tongue WT, with Polypropylene Tape
-Modular-Style Steel Wheels, R15", 5 lug on 4.5" BHP, White	-ST205/75R15 6-ply Radial Tires
-LED Lighting Package	-Modular-Style Steel Wheels, R15", 5 lug on 4.5" BHP, White
-Enclosed Wiring, Protected with Tubing/Hose and Sealed with Silicone	-LED Lighting Package
-A-Frame Mounted Jack Rated at 5K lbs	-Enclosed Wiring, Protected with Tubing/Hose and Sealed with Silicone
-3/4" Douglas Fir/Larch Plywood Floor	-A-Frame Mounted Jack Rated at 5K lbs
-5/16" x 30" Safety Chains, 7.6K lb Rating, with Safety Latch	-3/4" Douglas Fir/Larch Plywood Floor
-Pull Out Rear Ramp Rated at 1000lbs, 93" L x 66" W	-3/8" x 35" Safety Chains, 16.2K lb Rating, with Safety Latch
-Rear Ramp Door (Avoids setting ramp on ground when setting up)	-Pull Out Rear Ramp Rated at 1000lbs, 93" L x 66" W
-6 x 2,000lb Lashing Rings , ZP	-Rear Ramp Door (Avoids setting ramp on ground when setting up)
-8 x Underdeck Aluminum Hook Points	-9 x 2,000lb Lashing Rings , ZP
-No Side Rail for Side Loading Capability	-12 x Underdeck Aluminum Hook Points
-Upward Deflecting Shield 27" (Drive Off Shield with Ski Guides)	-No Side Rail for Side Loading Capability
-Underside Spare Tire Mount	-Upward Deflecting Shield 27" (Drive Off Shield with Ski Guides)
-Deck to Ground Height: 30"	-Underside Spare Tire Mount
-Ground to Coupler Height: 20" When Level	-Deck to Ground Height: 30"
-GVWR: 2,990lbs (3,500lbs with additional electric brake option)	-Ground to Coupler Height: 20" When Level
	-GVWR: 7000lbs

-Available Sizes-

Description	STD. Payload	Dry Wt.
SASD-101x12-G2	2,075 lbs	915 lbs
SATD-101x22-G2	5,200 lbs	1800 lbs

-Available Options-

Description
Aluminum Wheel Upgrade PKG
Spare Wheel, Steel
Spare Wheel, Aluminum
Extra Lashing Rings 2k lb
Jack Caster Wheel
Super clamp Ski Hold Down/ Super glide Decking Upgrade

*Note: Payload is an estimated amount and actual may vary, refer to VIN tag for more info.